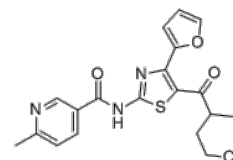


**Product Name** : KW-6356  
**Cat. No.** : PC-20102  
**CAS No.** : 858979-50-7  
**Molecular Formula** : C<sub>20</sub>H<sub>19</sub>N<sub>3</sub>O<sub>4</sub>S  
**Molecular Weight** : 397.45  
**Target** : Adenosine Receptor  
**Solubility** : 10 mM in DMSO



## Biological Activity

KW-6356 (Sipagladenant) is a potent and selective **adenosine A2A receptor** antagonist/inverse agonist with pK<sub>i</sub> value of 9.93 for human A2A receptor.

KW-6356 is a selective ligand for A2A receptor without a high affinity for other neurotransmitter receptors.

KW-6356 exhibits high affinity for A2A receptor in humans, marmosets, dogs, rats, and mice, and high selectivity over the A1, A2B, and A3 receptors in all species.

KW-6356 inhibits CGS21680 induced the concentration-related accumulation of cAMP in Namalwa cells with pK<sub>B</sub> of 10.00, KW-6356 inhibits the constitutive activity of A2A receptor with pEC<sub>50</sub> value of 8.46 in HEK293 cells expressing human A2A receptor.

KW-6356 exerts antagonistic activities and behaves as an insurmountable antagonist, while istradefylline (Cat# PC-42728) acts as a surmountable antagonist.

## References

Ohno Y, et al. *Mol Pharmacol*. 2023 Mar 9;MOLPHARM-AR-2022-000633.

**Caution: Product has not been fully validated for medical applications. Lab Use Only!**

E-mail: tech@probechem.com